



Spare parts for:

Warewashing equipment



Suitable for:

BODSON



This catalogue is automatically generated.
Therefore, the sequence of the items might
not be always shown at best.

Updates will be issued in case of additions
and/or amendments.

Suitable universal spare parts may not be included





Suitable for:

BODSON



Suitable for:

Drain taps and accessories

3356151 DRAIN CONTROL TRIANGLE
for PAN WASHER BODSON C63



BODSON B120629

3356150 PVC DRAIN VALVE FOR PIPE \varnothing 40 mm
for PAN WASHER BODSON C63



BODSON 301924

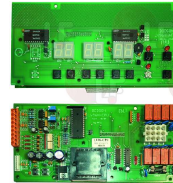
Electronic printed-circuit boards

3390377 DIAPHRAGM KEYBOARD
for Pan/utensilwashing machines (BODSON) C63 - C87
PA53 - PA63 - PA87



BODSON 301766

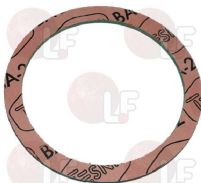
3390378 HORIZONTAL ELECTRONIC BOARD
board type LV96H-AFF e LV96H-CPU
for Pan/utensilwashing machines (BODSON) C63 - C87
PA53 - PA63 - PA87



BODSON 301943

Gaskets and seals

3786702 HEATING ELEMENT GASKET \varnothing 93x77x3 mm
for Pan/utensilwashing machines (BODSON) C63 - C87
PA53 - PA63 - PA87



BODSON 202934

Heating elements

3455457 RINSE HEATING ELEMENT 6KW 230/400V
screw type \varnothing 76 mm immersed length 280 mm
for Pan/utensilwashing machines (BODSON) C6H - C63
PA53 - PA63



BODSON 302260

3455459 WASHING HEATING ELEMENT 3KW 230/400V
screw type 76 mm immersed length 235 mm
for Pan/utensilwashing machines (BODSON) C63
PA53 - PA63



BODSON 301378

- 3455458 WASHING/RINSE HEATING ELEMENT**
6KW 230-400V screw-type \varnothing 76 mm immersion 370 mm
for Pan/utensilwashing machines (BODSON) C87
PA87



BODSON 301377

Microswitches

- 3803065 MAGNETIC CONTACT F/DOOR LIMIT SWITCH**
SCHMERSAL BN 310-10Z 3A 120W 1NO
for Pan/utensilwashing machines (BODSON) PA53



BODSON 301892

- 3803064 MICROSWITCH ZCMD25 1,5A 400V**
for Pan/utensilwashing machines (BODSON) C63 - C87
PA63 - PA87



BODSON 302081

Pressure switches

- 3320244 LEVEL PRESSURE SWITCH 80/20**
for Pan/utensilwashing machines (BODSON) C63 - C87
PA53 - PA63 - PA87



BODSON 301844

Probes

- 3397203 WASHING/RINSE TEMPERATURE PROBE**
cable length 5 m bulb length 23x8mm
value 1800ohms
for PAN WASHER BODSON C63-C87-PA53-PA63-PA87



BODSON 301900



Suitable for:

BODSON



Suitable for:

Solenoid valves

3120566 DANFOSS COIL 24V 18W
without connector 018F7358
for Pan/utensilwashing machines (BODSON) C63 - C87
PA53 - PA63 - PA87



BODSON 301542

3120565 DANFOSS VALVE EV220B 1/2FF
without coil size 80 mm
for Pan/utensilwashing machines (BODSON) C63 - C87
PA53 - PA63 - PA87



BODSON 301537

Supports

3391068 DOOR WING STOPPER
external \varnothing 30 mm - internal \varnothing 11 mm - h 17 mm
for Pan/utensilwashing machines (BODSON) C63



BODSON B140079

3391067 RINSE HUB RING NUT
external \varnothing 25 mm internal \varnothing 17 mm
for Pan/utensilwashing machines (BODSON) C63 - C87
PA53 - PA63 - PA87



BODSON 700311

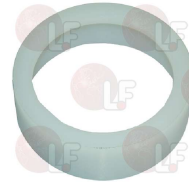
3391064 SLIDING RING NUT
external \varnothing 97 mm - h 24 mm
internal \varnothing 70 mm
for Pan/utensilwashing machines (BODSON) C63 - C87
PA63 - PA87



BODSON B151068

BODSON 700310

3391066 SLIDING RING NUT
external \varnothing 71 mm internal \varnothing 56 mm
for Pan/utensilwashing machines (BODSON) PA53



BODSON B141039

3391063 WASHING HUB BEARING
external \varnothing 30 mm - internal \varnothing 21 mm
for Pan/utensilwashing machines (BODSON) C63 - C87
PA53 - PA63 - PA87



BODSON 600803

3391065 WASHING HUB SMOOTH BEARING
external \varnothing 23 mm - h 20 mm - internal \varnothing 21 mm
for Pan/utensilwashing machines (BODSON) C63 - C87
PA53 - PA63 - PA87



BODSON 600804



Transformers

- 3739029 TRANSFORMER PRIM 230-400V SEC 2x24V**
power 190 VA
for Pan/utensilwashing machines (BODSON) C63 - C87
PA63 - PA87



BODSON 901783

Wash and rinse arms and accessories

- 3743854 WASHER 20x35x3 mm**
for Pan/utensilwashing machines (BODSON) C63 - C87
PA53 - PA63 - PA87



BODSON 203479

Wash jets and accessories

- 3501256 RINSE NOZZLE**
for Pan/utensilwashing machines (BODSON) C63 - C87
PA53 - PA63 - PA87



BODSON 600843

The data herewith contained may change without notice and LF SpA cannot be held responsible for possible errors stated or resulting by the use of this document. All rights reserved. No part of this publication may be reproduced without written permission by LF SpA.



LF SpA
via Voltri, 80 - 47522 Cesena (FC) ITALIA
Tel. +39 0547 34 11 11 - Fax +39 0547 34 11 10
www.lfircambi724.it - www.lfircambi724.mobi
info@lfircambi.it
Export Dept.: Tel. +39 0547 34 11 50 - Fax: +39 0547 34 11 55
www.lfspareparts724.com - www.lfspareparts724.mobi
export@lfspareparts.com

FRANCE



EPGC Sas
13, Rue des Forts - 59960 Neuville en Ferrain
Tél. +33 (0)3 20 25 06 21
Fax +33 (0)3 20 25 34 12
www.epgc.com
www.epgc724.mobi
epgc@epgc.com

DEUTSCHLAND



LF GmbH
Junkersstrasse, 1 - D-82178 Puchheim - München
Tel. +49 89 89 45 78 66
Fax +49 89 89 45 78 88
www.lfersatzteile724.de
www.lfersatzteile724.mobi
info@lfersatzteile.de

SCHWEIZ



LF GmbH Verkaufsbüro
Sennweidstrasse, 45 - CH-6312 Steinhausen
Tel. +41 (0)41 760 15 80-1
Fax +41 (0)41 760 15 85
www.lfersatzteile724.ch
www.lfersatzteile724.mobi
info@lfersatzteile.ch

ESPAÑA



LF Repuestos Horeca S.L.U.
Calle Ciudad Real, 10 - 45517 Escalonilla - Toledo
Tif. +34 91 477 91 00
Fax +34 91 477 90 81
www.lfrepuestos724.es
www.lfrepuestos724.mobi
info@lfrepuestos.es

UNITED KINGDOM



LF Spare Parts Ltd.
A10a Lakeside Business Park, Broadway Lane
South Cerney, Gloucestershire GL7 5XL
Tel. +44 (0)1285 86 16 25
Fax +44 (0)1285 86 39 49
www.lfspareparts724.co.uk
www.lfspareparts724.mobi
info@lfspareparts.co.uk

RUSSIA



OOO LF
ul, Anatoliya Zhivova, 8 - office 1 - 123100 Moscow
Tel. +7 499 259 85 75
Fax +7 495 725 26 53
www.lfspareparts724.ru
www.lfspareparts724.mobi
info@lfspareparts.ru

CHINA



LF China
Room 102, House 8, Lane 725, Mao Tai Rd.
Changning Dist. - 200336 Shanghai
Tel. +86 (0)21 33 53 66 31
Fax +86 (0)21 33 53 66 32
www.lfspareparts724.com
www.lfspareparts724.mobi
china@lfspareparts.com